



ADITHYA INSTITUTE OF TECHNOLOGY
Coimbatore – 641 107

MANDATORY DISCLOSURE

Date of Updation : 28.08.2008

I NAME AND ADDRESS OF INSTITUTION

Name	ADITHYA INSTITUTE OF TECHNOLOGY	
Address	Permanent Location as approved by AICTE	Temporary Location (if applicable)
	SF No 348/1, 349/1, Kurumbapalayam SS Kulam (PO), Coimbatore – 641 107	N/A
Village	Kurumbapalayam	
Taluk	Coimbatore (North)	
District	Coimbatore	
Pin Code	641107	
State	Tamil Nadu	
STD Code	0422	Phone No: 2654504
Fax No.	2654501	E-Mail: info@adityatech.com
Nearest Rly Station	Coimbatore Junction (15 kms)	
Nearest Airport	Coimbatore Civil Aerodrome (9 kms)	
Web site	www.adityatech.com	
File No with date of first approval : 06/05/TN/E&T/2008/08 dt 27.06.2008		

II NAME AND ADDRESS OF PRINCIPAL

Name	Dr.N.KATHIRAVAN				
Designation	PRINCIPAL	Qualification & Experience	Highest Degree	Specialization	Total Experience
			Ph.D	Mechanical Engineering	20 years
STD Code	0422	Phone No. (O) 2654505	Fax No.	2654501	
STD Code	0422	Phone No. (R) 2492192	Fax No.	-	
E-Mail	nkathiravan@adityatech.com nkathiravan@rediffmail.com	Mobile No.	9842677711		

III NAME OF THE AFFILIATING UNIVERSITY**ANNA UNIVERSITY COIMBATORE****IV GOVERNANCE****Members of Board and their Brief Background**

S.No	Name	Position	Present Professional Position
1	C.Sukumaran	Chairman	Industrialist
2	T.O.Chinnasamy	Member	Industrialist
3	S.Parimala	Member	Industrialist
4	T.Nagarajan	Member	Industrialist
5	T.R.Marannan	Member	Industrialist
6	Dr.M.Gurusamy	Member	Educationist
7	Dr.N.Kathiravan	Member Secretary	Principal, AIT

Members of Academic Advisory Body

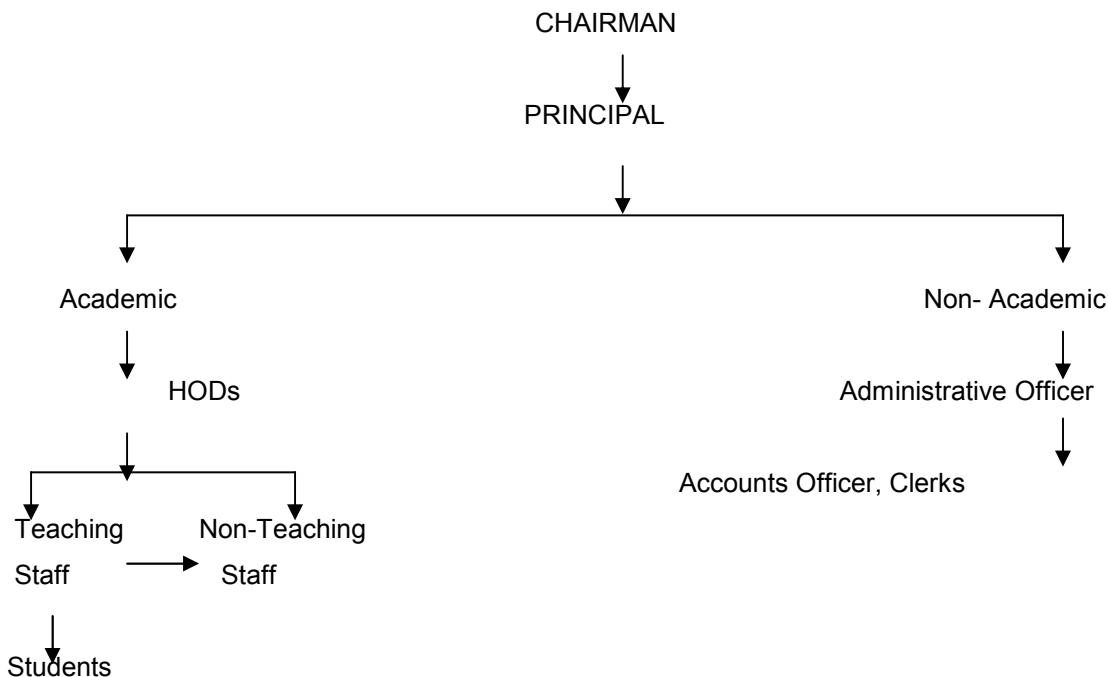
S.No	Name	Position	Present Professional Position
1	Dr.N.Kathiravan	Chairman	Principal, AIT
2	Dr.J.Rajaram	Member	Professor in Chemistry
3	Prof.K.Sakthivel	Member	Professor in Physics
4	Prof.S.Kumaraghuru	Member	Assistant Professor in Maths
5	Prof.P.Vetrivelan	Member	H.O.D. - ECE
6	Prof.D.Sumathi	Member	H.O.D. - CSE
7	Prof.R.Subathra	Member	H.O.D. - IT
8	Pon.Rathnavel	Member	Senior Lecturer, Mech. Engg. ,

☞ Frequency of Board Meetings and Academic Advisory Body :

Board meeting – twice in a year

Academic advisory Body Meeting – once in a month

☞ Organisational Chart & Process



☞ Nature and Extent of involvement of Faculty and students in academic affairs / improvements

Faculty:

- * Participating and presenting papers in various conferences / Seminars / Symposium
- * Participating in Faculty Development Programs conducted by AICTE and Universities
- * Preparation of Lab Manuals and Text Books
- * Publishing Papers in Various Journals.
- * Arranging guest lectures on important topics of interest.
- * Arranging Practical Training for Students
- * Setting up Labs for their specialization and carrying out R & D Projects
- * To take initiatives in preparing and delivering e-learning systems
- * To identify and redress the problems of slow learners

Students

- * To undergo the systematic practical training offered by the college
- * Organizing department wise association activities

* Actively participating in paper presentation and allied events conducted in different colleges / Institutions.

* Actively participating in co-curricular activities like NSS, NCC, YRC, NSO

* Actively Participating in Extra Curricular activities outlined by the institution

✍ Mechanism /Norms & Procedure for democratic/good governance

- ❖ Every month. Class Committees will be conducted with student representatives and subject teachers for each class. Students are free to express their grievance both for academic and non academic matters. The represented problems are solved then and there.
- ❖ Regular parents meetings will be conducted and feed back from the parents and students are received about the Institution.
- ❖ Based on the feed back from the parents and students, activities will be charted to achieve total satisfaction of the students and parents.
- ❖ For improving faculty performance, we plan to get the rating of faculty in every subject at the end of the semester from the students. A feedback is also planned for governance and administration related activities.

✍ Grievance Redressal mechanism for faculty, staff and students

The Tutor Ward Meetings will be conducted every week. The grievances from the students are collected through the tutors. The record of grievances will be maintained by recording the information obtained from the students during tutor ward meetings and class committee meetings. The grievances of the faculty and staff are collected by the HODs. The grievances obtained will be presented for discussion during the academic advisory meeting and board meeting. The grievances will be redressed amicably.

V PROGRAMMES

Course	Sanctioned intake	Duration in Year	Cut of Mark	Fee in Rs. *	Placement facilities
B.E. CSE	60	4	As Per Government Norms	32,500 or 62500	Training & Placement Facilities are planned & will be arranged
B.E. ECE	60	4		32,500 or 62500	
B.E. Mech. Engg.	60	4		32,500 or 62500	
B.Tech. -IT	60	4		32,500 or 62500	

* Rs.32,500 for Government Quota & Rs. 62,500 for Management Quota

VI FACULTY

S.No	Course	Permanent Faculty	Permanent Faculty : Student Ratio
1	BE - CSE	16	1 : 15
2	BE – ECE		
3	BE – Mech. Engg.		
4	B. Tech – IT		
5	Humanities & Science		
	Total		

VII PROFILE OF DIRECTOR/PRINCIPAL WITH QUALIFICATIONS, TOTAL EXPERIENCE, AGE AND DURATION OF EMPLOYMENT AT THE INSTITUTE CONCERNED

Annexure 1

VIII FEE

☞ Details of fee, as approved by State fee committee, for the Institution

S.No.	Category	CET quota		Management quota	
		Fixed by the State Fee Committee	Being charged by the Institution	Fixed by the State Fee Committee	Being charged by the Institution
1.	Admission Fee				
2.	Tuition Fee	32500	32500	62500	62500
3.	University fee (Examination fee, Registration fee etc.)	As per Government Norms			
4.	Hostel fee (Rent)		12000		12000
5.	Laboratory fee				
6.	Library fee				
7.	Any other				

☞ Time schedule for payment of fee for the entire programme : At the time of admission

☞ No. of fee waivers granted with amount and name of students : Nil

☞ No. of scholarship offered by the institute, duration and amount : Nil

☞ Criteria for fee waivers/scholarship : To be defined

☞ Estimated cost of Boarding and Lodging in Hostels. : Rs. 30,000 per annum approx.

IX ADMISSIONS

☞ Number of seats sanctioned with the year of approval.

S.No	Course	Intake	Year of Approval
1	BE CSE	60	2008
2	BE ECE	60	2008
3	BE Mech. Engg.	60	2008
4	B.Tech. IT	60	2008

X ADMISSION PROCEDURE

☞ Mention the admission test being followed, name and address of the Test Agency and its URL (website).

Government Quota:

Tamilnadu Engineering Admissions
ANNA UNIVERSITY
Guindy, Chennai-25
www.annauniv.edu

Management Quota:

Professional Course Admissions
Consortium of Self Financing Professional
Arts and Science College in Tamilnadu
Royapettah, Chennai- 14.
www.tnsfconsortium.org

☞ Number of seats allotted to different Test Qualified candidates separately
[AIEEE/CET (State conducted test/University tests)/Association conducted test]

As per Government Norms

☞ Calendar for admission against management/vacant seats:

As per Government Norms

XI CRITERIA AND WEIGHTAGES FOR ADMISSION

☞ Describe each criteria with its respective weightages i.e. Admission Test, marks in qualifying examination etc.

Govt. of Tamilnadu norms was adopted for criteria and weightages for admission.

☞ Mention the minimum level of acceptance, if any.

Govt. of Tamilnadu norms was adopted for minimum level of acceptance

XII APPLICATION FORM

XIII LIST OF APPLICANTS

XIV RESULTS OF ADMISSION UNDER MANAGEMENT SEATS/ VACANT SEATS

This information be made available in the public domain after the admission process is over

XV INFORMATION ON INFRASTRUCTURE & OTHER RESOURCES AVAILABLE

☞ LIBRARY

1. Number of Library books/Titles/Journals available (programme-wise)

S. No	Course(s)	Number of titles of the books	Number of volumes	Journals	
				National	International
1	B.E. (CSE)	265	1076	6	5
2	B.E. (ECE)	284	1237	5	3
3	B.E. (Mech. Engg)	289	1140	6	5
4	B.Tech. (IT)	274	1076	5	3
5	Science & Humanities	268	1058	7	-

2. List of online National/International Journals subscribed : No

3. E-Library facilities: Available. 15 Computers Earmarked for the purpose

☞ LABORATORY

1. List of Major Lab Equipments/ Facilities (Lab Wise)

S.No	Name of the laboratory/workshop	Major Equipment
1	Physics Lab	Ultrasonic Interferometer
2	Chemistry Lab	Spectrophotometer
3	Workshop	Welding Transformers
4	Programming Lab	Quadcore Server
5	Electrical Circuits Lab	Reciprocity Theorem Kit
6	Electrical Machines Lab	DC Shunt Motors
7	Electron Devices Lab	CRO
8	Communications Lab	P4 Processor Systems
9	Fluid Mechanics & Machinery Lab	Centrifugal Pump

2. List of Experimental Set Up (Lab Wise)

As per the syllabus of Anna University, Coimbatore

✍ COMPUTING FACILITIES

S.No	Particulars	Availability	
1.	No of Computer terminals	120	
2.	System Configuration	Processor Intel Core Duo 2.2 GHz Integrated Intel Graphics Media Accelerator 160GB Serial ATA HDD 17" Monitor 1 GB DDR2 RAM	
3.	No of terminals of LAN/WAN	105	
4.	Relevant Legal Software	Application Software Solid Works Solid Edge Open Office Inventor (Mechanical) iTalc 1.0 GCC Under Linux	System Software Windows XP OLP Ubuntu Linux 7.10
5	Internet Accessibility (in kbps & hrs)	1 MBPS	

✍ WORKSHOP

1. List of Facilities Available

- ❖ Assorted components for plumbing
- ❖ Arc welding transformer with cables and holders
- ❖ Welding booth with exhaust facility
- ❖ Welding accessories like welding shield, chipping hammer, wire brush, etc.
- ❖ Oxygen and acetylene gas cylinders, blow pipe and other welding outfit.
- ❖ Centre lathe
- ❖ Sheet Metal Tools and Accessories
- ❖ Electrical measuring instruments
- ❖ Assorted electrical components for house wiring
- ❖ Soldering guns 10 Nos.
- ❖ Assorted electronic components for making circuits 50 Nos.
- ❖ Small PCBs

✍ LIST OF FACILITIES AVAILABLE

1. **Games and Sports Facilities** : Available
2. **Extra Curricular Activities** : Planned
3. **Soft Skill Development Facilities** : Planned
4. **Number of Classrooms and Size of Each** : 4 & 99 sq.m. each
5. **Number of Tutorial Rooms and Size of Each** : 2 & 99 sq.m. each
6. **Number of laboratories and Size of Each** : 9 Totalling to an area of 1950 sq.m.
7. **Number of drawing halls and size of each** : 1 & 216 sq.m. each
8. **Number of Computer centres and size of each** : 1 & 216 sq.m.

9. Central Examination Facility, Number of rooms and capacity of each. : As per the new notification of Anna University Coimbatore

10. Teaching Learning process

- ❖ **Curricula & Syllabi for each of the programmes as approved by the university** – As per Anna University, Coimbatore
- ❖ **Academic Calendar of the University** - As per Anna University, Coimbatore
- ❖ **Academic Time Table** - As per AICTE Norms
- ❖ **Teaching Load of Each Faculty** – As per AICTE Norms
- ❖ **Internal Continuous Evaluation System** – As per Regulations of Anna University, Coimbatore
- ❖ **Students' assessment of Faculty, System in place** – System has been designed